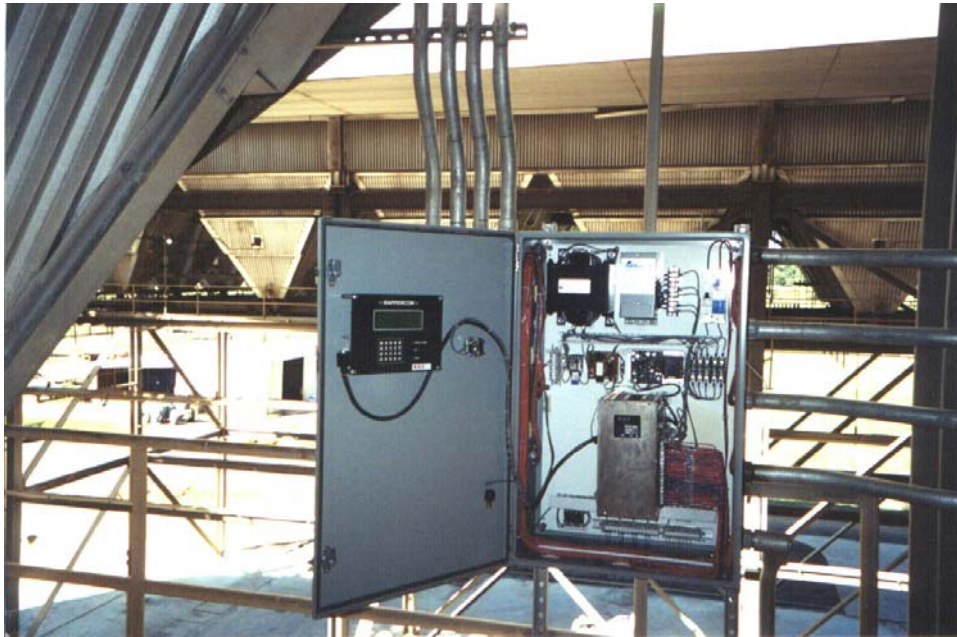
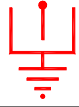


HOPPER RAPPER SYSTEM



Based on the proven performance and reliability of the Model SR-A1 rapper, the Hopper Rapper System is the most economical and effective approach to solving hopper plugging problems when more than twelve **HOPPER HAMMERS™** are required in one application. Rather than using a Model 300 Single Rapper Control, one Hopper Rapper Control Unit (HRCU) is provided to operate all rappers. The HRCU is provided in a wall mounted NEMA 4 enclosure. Inside the enclosure is all the equipment required to operate the hopper rappers. This includes a control chassis with plug-in circuit boards that controls power to each hopper rapper, switches to the selected hopper rapper, and detects input requests to operate specific groups of hopper rappers. A keyboard/display is mounted inside the cabinet to allow programming of the hopper rappers for impact strength, rapping frequency and duration of operation. Also provided in the enclosure are control components such as circuit breakers, transformers, fuses, and output terminal blocks.



The HRCU can be programmed to remain idle unless an input signal is received or it can operate the hopper rappers on a regular schedule. If the HRCU is operating hopper rappers in the idle mode or regular schedule and a contact closure is detected, the HRCU will interrupt the current operation and operate the requested hopper rappers until the input is removed. The control will then return to the point where the program was interrupted. If two or more inputs are present at the HRCU, the control will complete operation of the first hopper rappers received, then proceed to the second group of hopper rappers and then to the third and so on. If the first input is still present after completing the cycle, the control will again operate the first group. When all inputs are cleared, the HRCU will return to the normal program.

The sharp, discrete impacts of the Model SR-A1 rapper are more effective in dislodging material from hopper walls than the high frequencies of a vibrator. Also, the SR-A1 requires no maintenance.

For Sales:

Phone:

800 417 0005

FAX:

805 531 8903

Email:

sales@avcspecialists.com

For Engineering:

Moorpark, CA:

800 417 0005